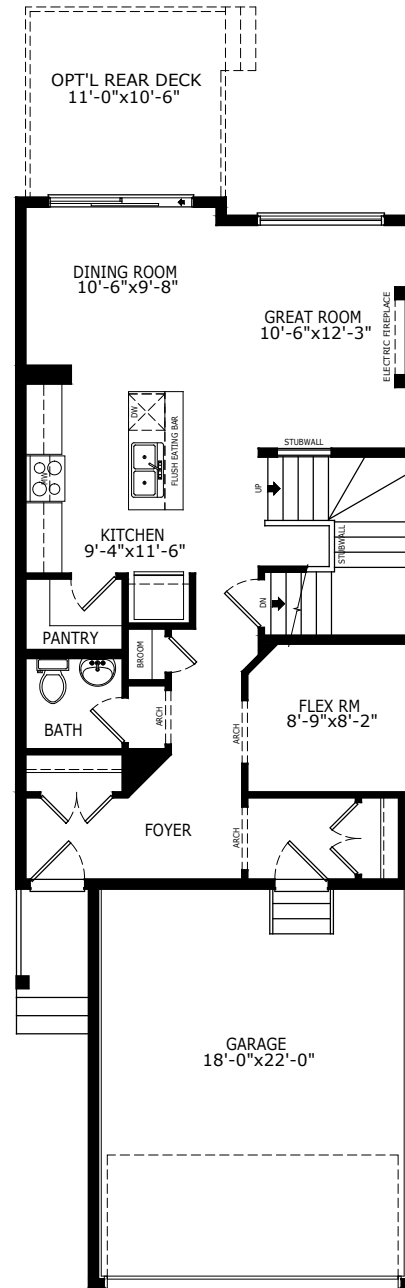
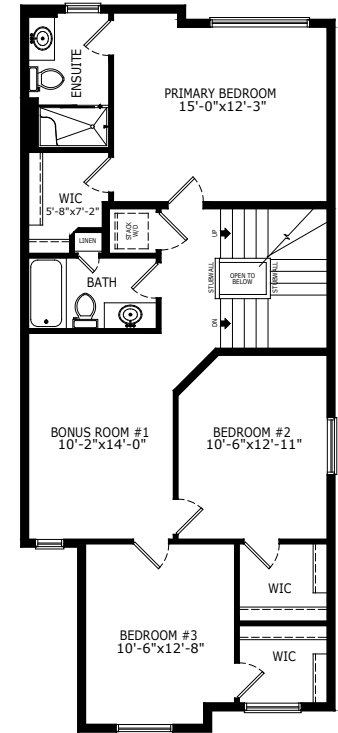


**2183 SQ FT**  
**3 BEDS**  
**2 FULL/2 HALF**  
**BATH**

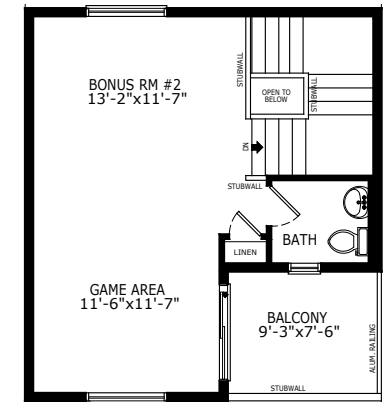
# ABBOTT 2



**MAIN: 825 SQ FT**



**2ND FLOOR: 974 SQ FT**



**THIRD FLOOR: 384 SQ FT**

# Sterling HOMES

A QUALICO Company

## ELEVATIONS



CRAFTSMAN



FARMHOUSE



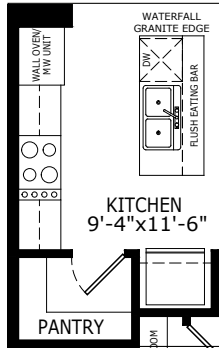
MODERN



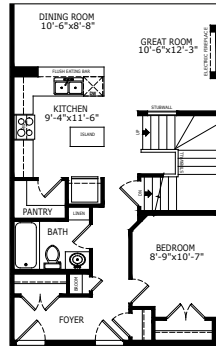
PRAIRIE

## MAIN FLOOR OPTIONS

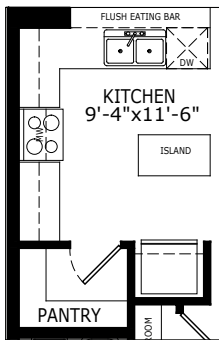
OPTIONAL EXECUTIVE KITCHEN



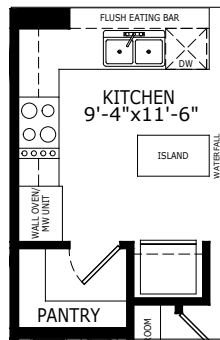
OPTIONAL MAIN FLOOR BEDROOM & FULL BATH



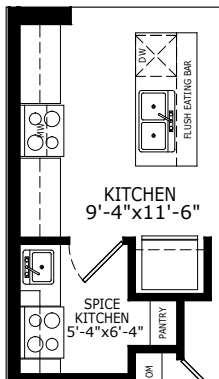
OPTIONAL KITCHEN



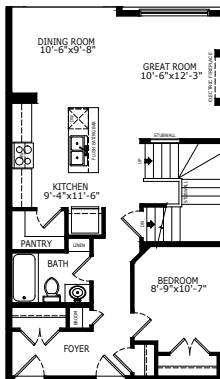
OPTIONAL KITCHEN WITH EXECUTIVE KITCHEN



OPTIONAL SPICE KITCHEN

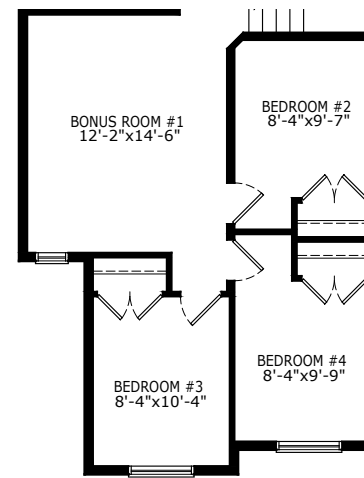


OPTIONAL MAIN FLOOR WITH BEDROOM & FULL BATH

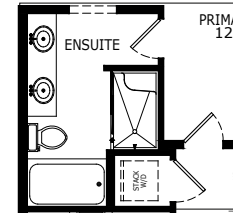


## UPPER FLOOR OPTIONS

OPTIONAL 4 BEDROOMS

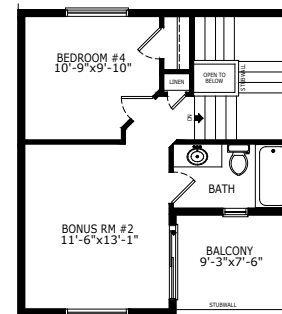


OPTIONAL ENSUITE



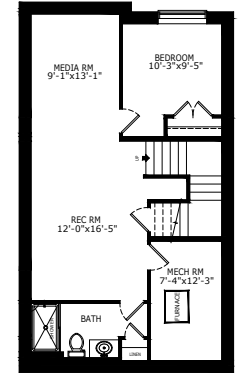
## THIRD FLOOR OPTIONS

OPTIONAL THIRD FLOOR WITH BALCONY, BEDROOM & FULL BATH

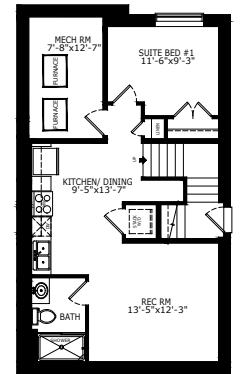


## BASEMENT OPTIONS

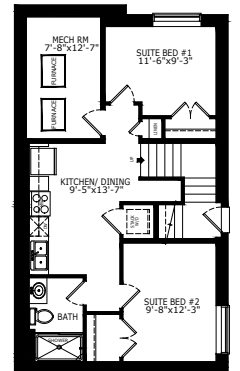
STANDARD 579 SQ FT



1 BEDROOM 'LEGAL SUITE' 581 SQ FT



2 BEDROOM 'LEGAL SUITE' 581 SQ FT



\*Legal Suite availability varies by community and municipal regulations.



Scan here for floorplan options and more

# Build Your Life

STERLINGCALGARY.COM